

***Physocephala inhabilis* (WALKER) (Diptera: Conopidae) parasitizing
Megachile (Moureapis) maculata SMITH (Hymenoptera: Megachilidae)**

[*Physocephala inhabilis* (WALKER) (Diptera: Conopidae) parasitiert
Megachile (Moureapis) maculata SMITH (Hymenoptera: Megachilidae)]

by

Jens-Hermann STUKE and Carolina F. CARDOSO

Leer (Germany)

Belo Horizonte (Brazil)

Abstract

Physocephala inhabilis (WALKER, 1849) was reared from *Megachile (Moureapis) maculata* SMITH, 1853. This is the first record of a Neotropical conopid that parasitizes a *Megachile*. An overview of the Conopidae reared so far from *Megachile* species is given.

Keywords

Conopidae, *Physocephala inhabilis*, Neotropical Region, Brazil, host record, parasitoid

Zusammenfassung

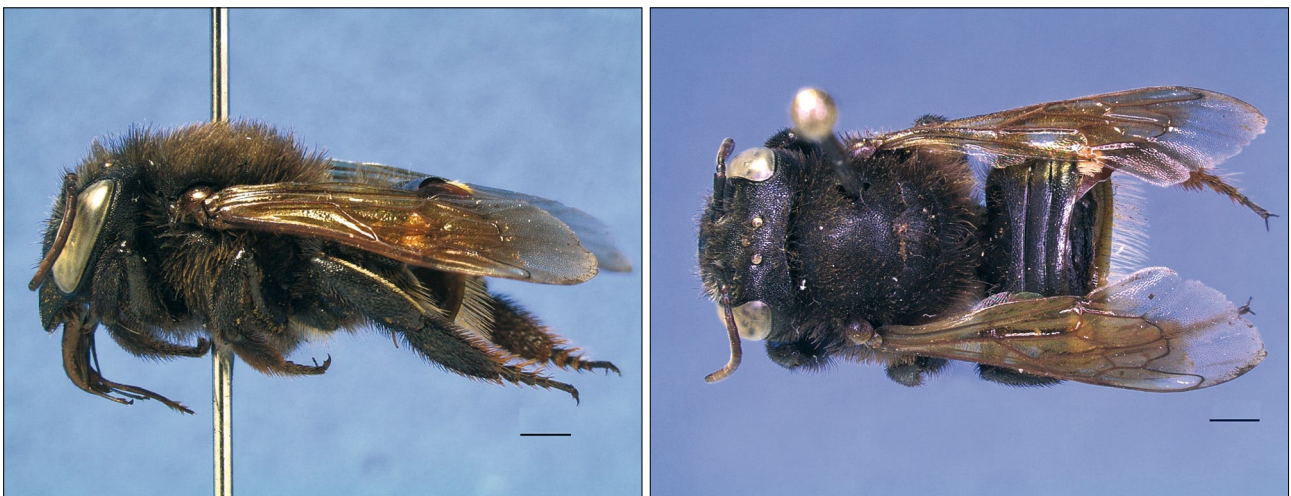
Physocephala inhabilis (WALKER, 1849) wurde aus *Megachile (Moureapis) maculata* SMITH, 1853 gezogen. Dies ist der erste Nachweis einer neotropischen Conopidae als Parasit von *Megachile*. Eine Übersicht zu den bislang aus *Megachile*-Arten gezogenen Conopiden wird gegeben.

Stichwörter

Conopidae, *Physocephala inhabilis*, neotropische Region, Brasilien, Wirtsnachweis, Parasitoid

Introduction

CARDOSO & SILVEIRA (2012) published a host record of an unidentified Conopidae from *Megachile (Moureapis) maculata* SMITH, 1853 (Fig. 1 a, b). The emerged female Conopidae can now be identified as *Physocephala inhabilis* (WALKER, 1849) (Fig. 2 a–e).



1a 1b

Fig. 1: The female of *Megachile (Moureapis) maculata* SMITH. – a: Lateral view; – b: Dorsal view. Scale bars = 1.0 mm.